

Installation instruction | 09.07.2020

Installation instruction ABB-free@home[®]

Google Assistant



Table of contents

1	Control of free@home with the Google Assistant	3
2	Preconditions	3
3	Procedure	4
4	Setup	5
5	Notes on using the Google Assistant	8
6	Notes	9

1 Control of free@home with the Google Assistant

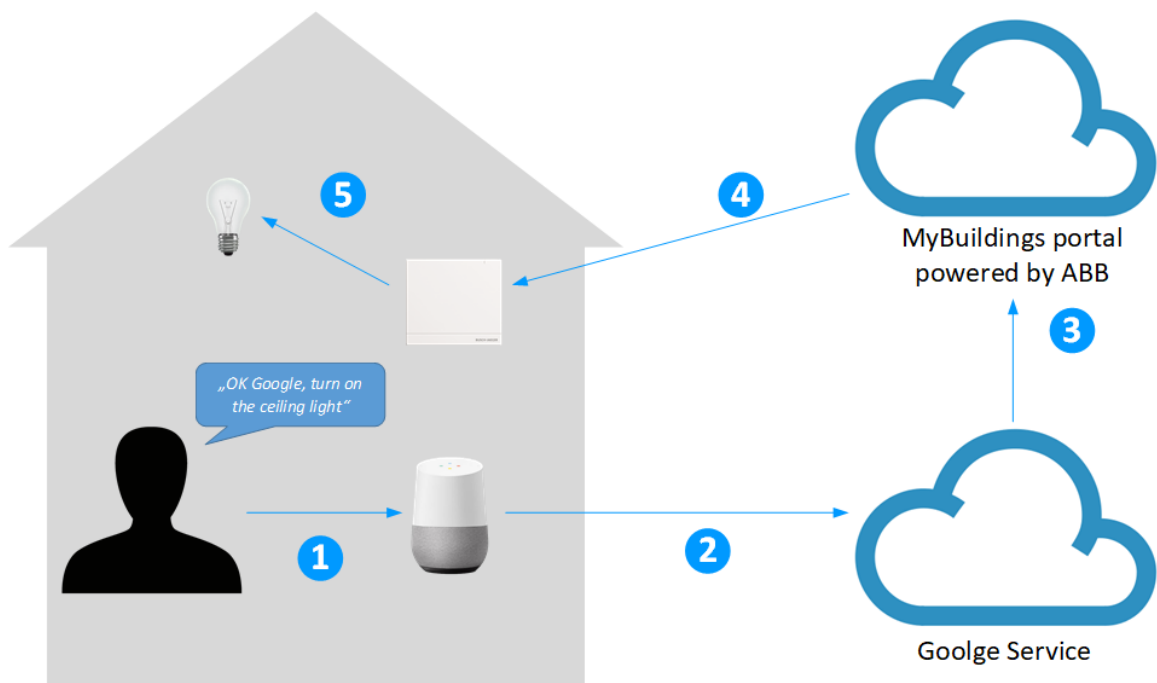
The free@home action for the Google Assistant allows easy control of free@home smart home devices using the Google voice assistant.

2 Preconditions

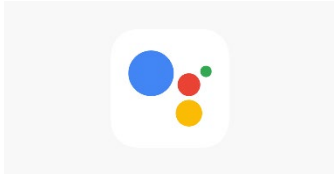
- A set up Google voice assistant (e.g. Google Home, Google Nest Mini, Sonos One, Sonos Beam, Sonos Arc)
- A Google Account
- A set up free@home system
- Internet connectivity

3 Procedure

1. The user activates the voice assistant through the wake word: "OK Google, ...".
2. The recorded sentence "switch on the ceiling light" is transmitted to the Google service and interpreted there.
3. The command "Switch on ceiling light" gets extracted from the voice information and is then transmitted to the MyBuildings portal service.
4. The command is then forwarded to the local free@home installation.
5. The command gets executed on site by a switch actuator.

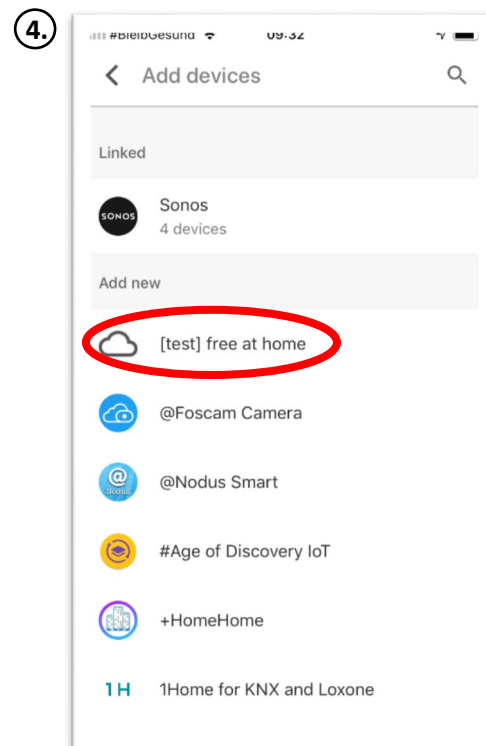
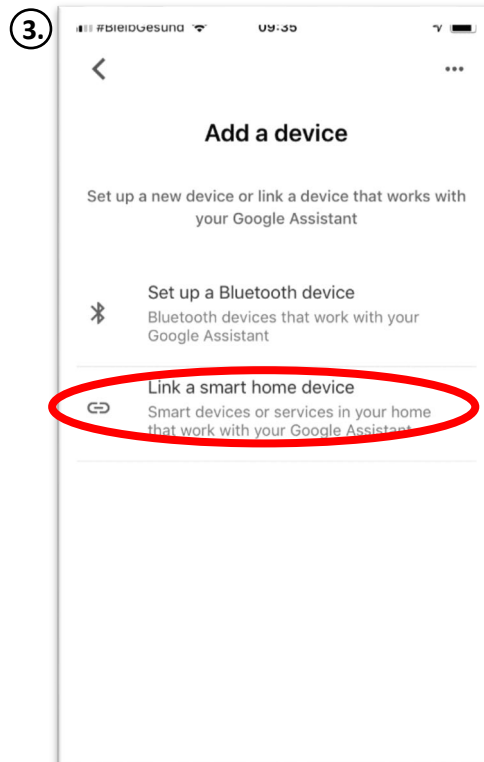
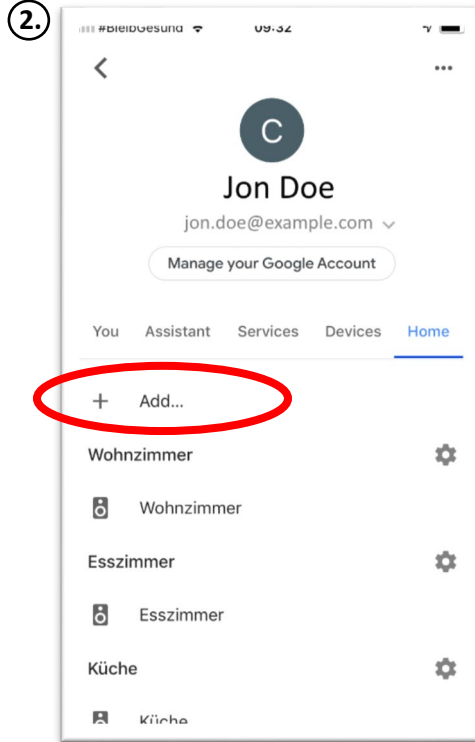
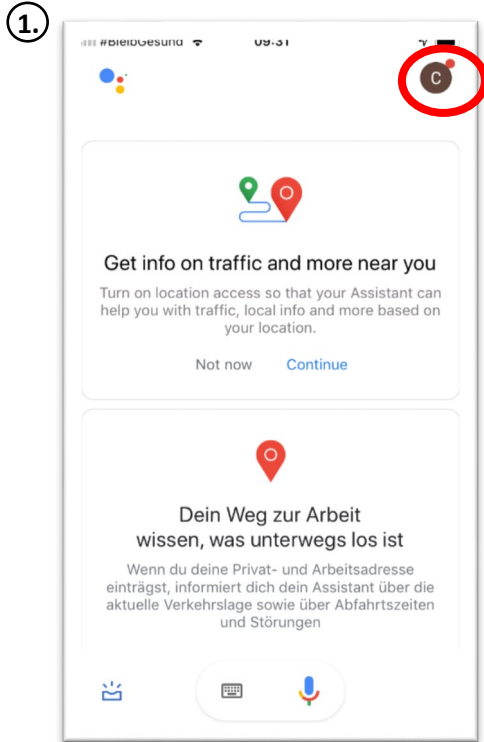


4 Setup

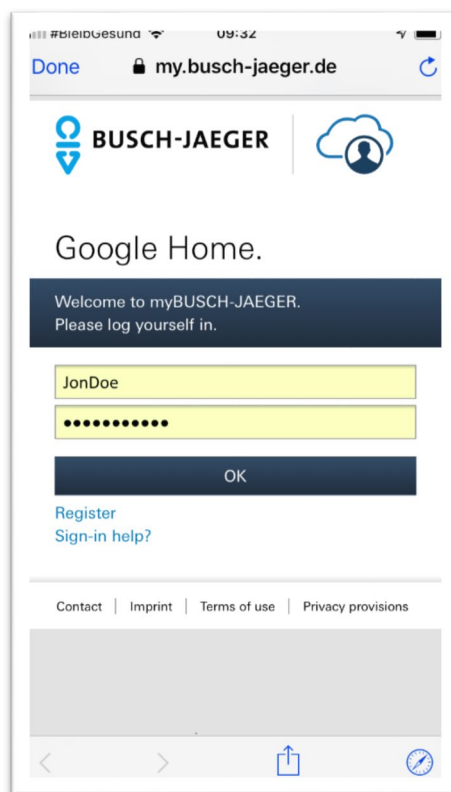
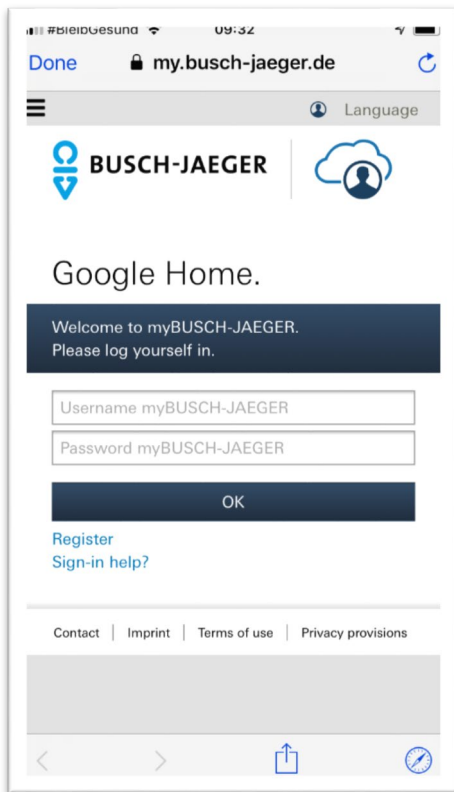
Schritt	Beschreibung
1	<p>Create an account at: mybuildings.abb.com</p> <p><u>Note:</u> To use the Google Assistant promotion, it is not necessary to subscribe to the paid remote access. To use the action, it is sufficient to create a MyBuildings account, an additional booking of remote access is not needed*.</p> <p>*: The free@home remote access enables secure mobile access to your free@home system, the use of the geofencing function, the sending of push notifications and emails.</p>
2	<p>Log in to the free@home user interface.</p> <p><u>Note:</u> You need the authorization level "Installation" or "Configuration" to be able to make all necessary settings.</p> <p>Make sure that your free@home system is at software version 2.5.0 or higher. If this is not already the case, update your system. The latest firmware version is automatically loaded when there is an internet connection (unless the "Download new firmware automatically" function was deactivated beforehand). If this is not the case, the latest firmware can also be downloaded from www.freeathome.de/firmware.</p>
3	<p>Select under "Settings" → "MyBuildings Portal" → "Connection" and enter your user data for the MyBuildings Portal there.</p> <p>Make sure the option:</p> <p><input checked="" type="checkbox"/> free@home API support</p> <p>is checked.</p>
4	<p>Open the Google Assistant app on your smartphone or tablet.</p> 

5

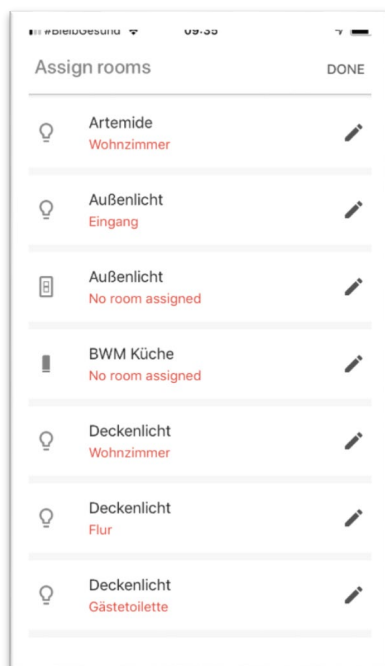
1. Open your profile page.
2. Select "Home" -> "Add".
3. Select "Link a smart home device".
4. Select the "free@home" service and add it.



- 6** You will now be forwarded to the myBusch-Jaeger portal. Enter your MyBuildings Portal access data here



- 7** If the connection has been successfully established, you will be returned to the Assistant app. Your free @home devices are added automatically.



- 8** You can now control your devices by voice command using the Google Assistant.

5 Notes on using the Google Assistant

1. Naming of devices

You enter the names of your devices in the free@home app. These are then transferred to the Google Assistant. If the names turn out to be impractical to be called out by voice, they can also be changed within the Assistant app. The names are only changed for the voice control, the names in the free@home system are retained.

2. Door communication

For security reasons, door openers in free@home system are not transferred to the Google Assistant.

3. Philips Hue devices

Philips Hue devices that were integrated in free@home are not transferred to the assistant. To control Philips Hue devices via the Assistant, use the Philips Hue service.

4. Sonos devices

Sonos devices that were integrated in free@home are not transferred to the Assistant. To control Sonos devices via Google, the Sonos service is to be used.

6 Notes



Busch-Jaeger Elektro GmbH
A member of the ABB Group

PO box
58505 Lüdenscheid

Freisenbergstraße 2
58513 Lüdenscheid

www.BUSCH-JAEGER.com
info.bje@de.abb.com

Central sales service:
Tel.: +49 2351 956-1600
Fax: +49 2351 956-1700